

# 2026 OPERATION SHELTER-IN-PLACE: A HAZMAT INCIDENT

*Shelter-In-Place means seeking immediate shelter inside a building when outside air quality is threatened or compromised by a chemical hazard; sheltering in place keeps you inside an area offering more protection.*

In a collaborative effort, the following organizations will host a **community-based exercise on Tuesday, April 28, 2026, at 10 am** to assist facilities and organizations in preparing for potential hazardous material spills or releases. This program will also assist healthcare facilities in meeting CMS training and testing requirements. All facilities and organizations in the community are encouraged to participate.

- Healthcare Coalitions (HCC):
  - Region 3 Healthcare Coalition Alliance & Big Bend HCC
- Local Emergency Planning Committees for Hazardous Materials (LEPC)
  - LEPC Districts - Apalachee, East Central, North Central, and Northeast
- Regional Domestic Security Task Force (RDSTF): Regions 2 and 3
- Regional Councils:
  - Apalachee, East Central, North Central, and Northeast

## **Training and Exercise Overview**

The above partners have collaborated to implement a training and exercise program to enhance shelter-in-place capabilities of community organizations and healthcare facilities for a hazardous materials incident.

Organizations and healthcare facilities interested in participating in this community-based exercise must fulfill the following requirements to receive a Letter of Participation.

### **1. Prepare - (Required)**

- a. Attend an in-person sponsored Shelter-in-Place Training (1.5 Hours)
- b. Multiple offerings are available in February and March 2026
  - i. Refer to the attached Training Flyer for registration information
- c. Only organizations/facilities that have attended training can participate in the Exercise

**2. Implement Training** – Take the lessons learned in the sponsored shelter-in-place training and conduct internal training at your organization or healthcare facility in preparation for the community-based exercise.

*Exercise details will be discussed at the pre-requisite training*

# 2026 OPERATION SHELTER-IN-PLACE: A HAZMAT INCIDENT

*Shelter-In-Place means seeking immediate shelter inside a building when outside air quality is threatened or compromised by a chemical hazard; sheltering in place keeps you inside an area offering more protection.*

**3. Conduct Exercise** - **On Tuesday, April 28, 2026, at 10 am**, registered organizations and healthcare facilities will participate. The scenario will simulate a hazardous materials threat and the subsequent need to implement shelter-in-place protocols.

**On Tuesday, April 28, 2026, at 10 am**, you will:

- Receive an alert/email from exercise planners with the scenario and exercise instructions.
- Organizations and healthcare facilities will be responsible for implementing their internal shelter-in-place protocols.
- Document the shelter-in-place exercise by obtaining a sign-in sheet for participants. If appropriate, take photos during the exercise.

**4. Evaluate Exercise** - When the shelter-in-place exercise is complete, take a moment to review actions that worked well and actions that need improvement with exercise players.

a. Complete the following steps by Friday, May 8, 2026.

- Complete an online participant evaluation survey
- Submit exercise participant sign-in-sheets to [eanderson@nefrc.org](mailto:eanderson@nefrc.org)
- Submit any photos that you would like us to include in the after-action report (optional) to [eanderson@nefrc.org](mailto:eanderson@nefrc.org)

**Documentation Provided** - By **Friday, June 12, 2026**, your organization will receive a regional after-action report and letter of participation that you can include with your facility-specific after-action report and improvement plan. These documents may be used to meet general exercise requirements or healthcare CMS training and testing requirements.

## For more information:

Eric Anderson, CEM, AICP, MEP  
Deputy CEO  
Northeast Florida Regional Council  
Email: [eanderson@nefrc.org](mailto:eanderson@nefrc.org)  
Phone: 904-505-3428

Tyler Nolen  
LEPC Coordinator  
Northeast Florida Regional Council  
Email: [tnolen@nefrc.org](mailto:tnolen@nefrc.org)  
Phone: 904-715-0423

*Exercise details will be discussed at the pre-requisite training*



# Shelter-in-Place Train-the-Trainer

Pre-Requisite to a Hazardous Materials Exercise

Healthcare facilities and other organizations interested in participating in the exercise on **Tuesday, April 28, 2026**, must complete the following shelter-in-place training requirement. Training opportunities will be offered in-person throughout the region. Exercise details will be discussed at the training, and will meet your 'Exercise of Choice' requirement.



# Shelter-in-Place Training: Train-the-Trainer

Pre-Requisite to a Hazardous Materials Exercise

**All trainings will be held in-person ONLY.**

**February 17, 2026 - St. Johns County**

10am to 12pm  
St. Johns County EOC  
100 EOC Drive, St. Augustine, FL 32092

**February 26, 2026 - Alachua County**

9am to 11am  
Gainesville Regional Utilities  
4747 N Main St, Gainesville, FL 32609

**March 3, 2026 - Leon County**

9:30am to 11:30am  
TROC Investigations  
2090 Summit Lake Dr, Tallahassee, FL 32317

**March 11, 2026 - Calhoun County**

9:30am to 11:30am (CST)  
Calhoun Liberty Hospital  
16257 State Rd. 71 S, Blountstown, FL 32424

**March 11, 2026 - Duval County**

1:00pm to 3:00pm  
FDLE Jacksonville Conference Center  
921 N Davis Street, Jacksonville, FL 32209

**March 12, 2026 - Marion County**

10:30am to 12:30pm  
Marion County EOC  
692 NW 30<sup>th</sup> Ave, Ocala, FL 34475

**March 17, 2026 - Columbia County**

9am to 11am  
Columbia County EOC  
263 NW Lake City Ave, Lake City, FL 32055

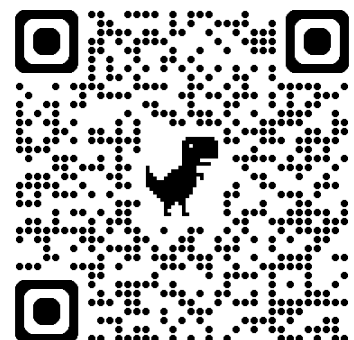
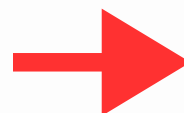
**March 24, 2026 - Madison County**

10am to 12pm  
Madison County Extension Office  
184 College Loop, Madison, FL 32340

**March 26, 2026 - Clay County**

10am to 12pm  
FDOH - Clay County  
1845 Town Center Blvd Building 400, Suite 405  
Fleming Island, FL 32003

**[Click to Register](#)**  
**[or Scan Here](#)**



Questions? Contact  
EAnderson@NEFRC.org

# Shelter-in-Place for Chemical Hazard

*If told not to evacuate or it is too late to evacuate*

When disaster strikes, it may be safer to stay in your home, place of employment, or other location. Learn where to go, what to do, and how long you should shelter-in-place for the hazards in your area.

**Chemical agents are poisonous vapors, aerosols, liquids and solids that have toxic effects on people, animals or plants.**

## Take Additional Safety Measures

Go inside as quickly as possible. Bring any pets indoors.

Lock all doors and windows for a better seal.

Turn off the air conditioner or heater, all fans, close the fireplace damper and any other place that air can come in from outside.

If available, tape plastic over window(s) in the internal room you are

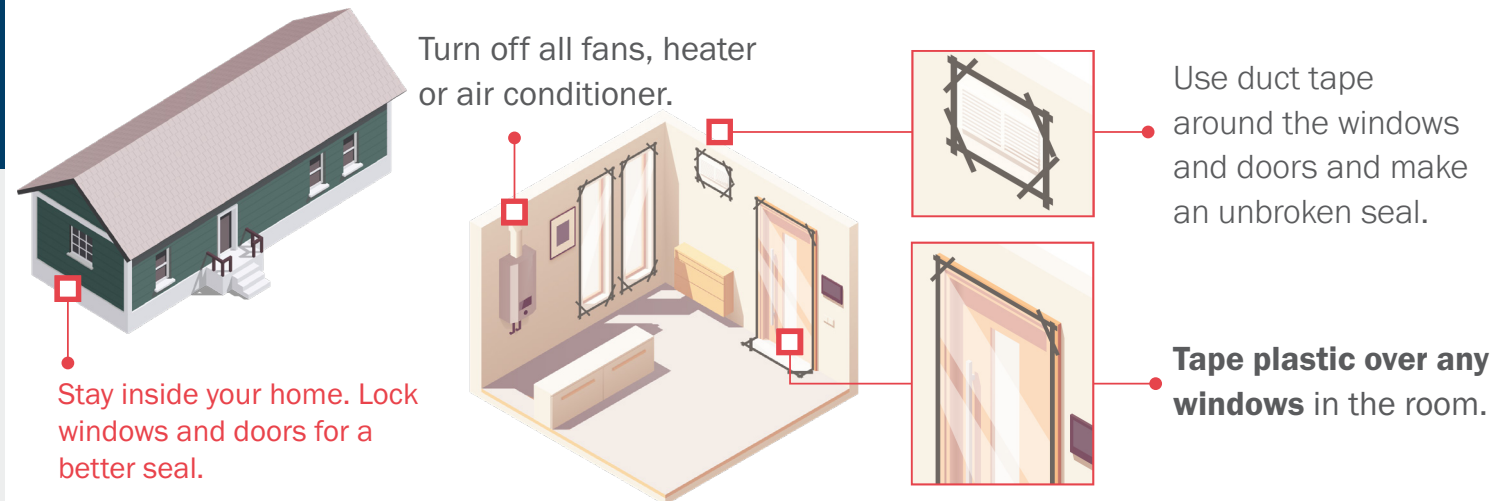
sheltering. Use duct tape around the windows and doors and make an unbroken seal. Tape over vents and seal any electrical outlets.

Do not drink water from the tap. Stored water will be safer.

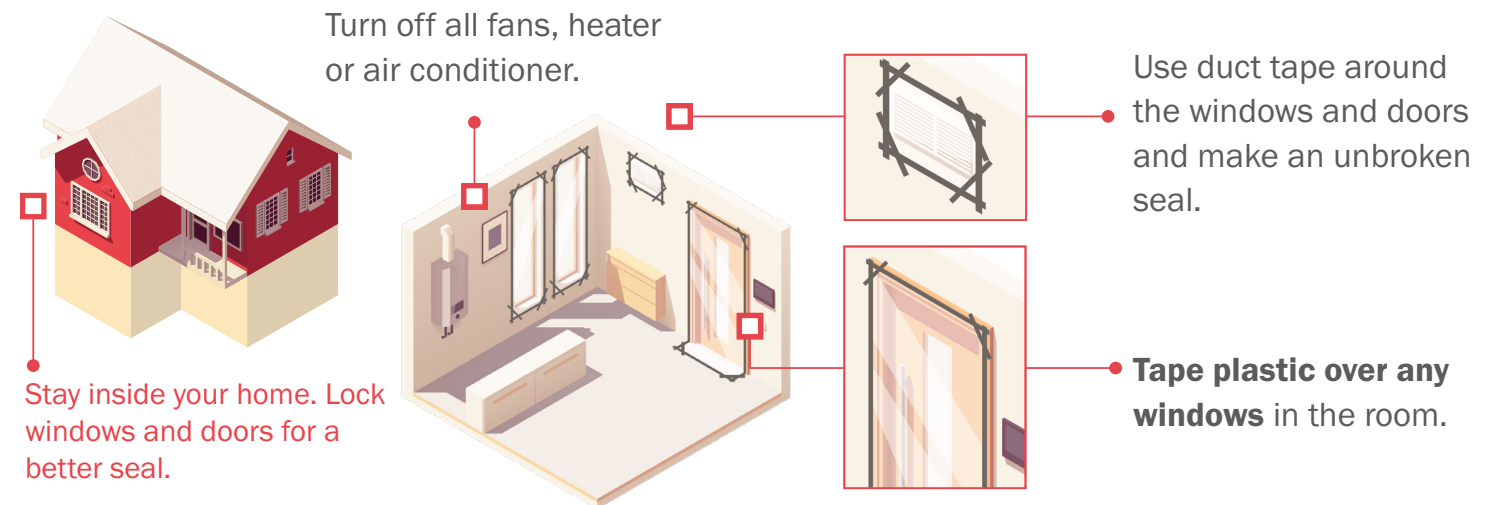
Listen for current emergency information and instructions from authorities.

Visit <https://community.fema.gov/ProtectiveActions/s/> for more information.

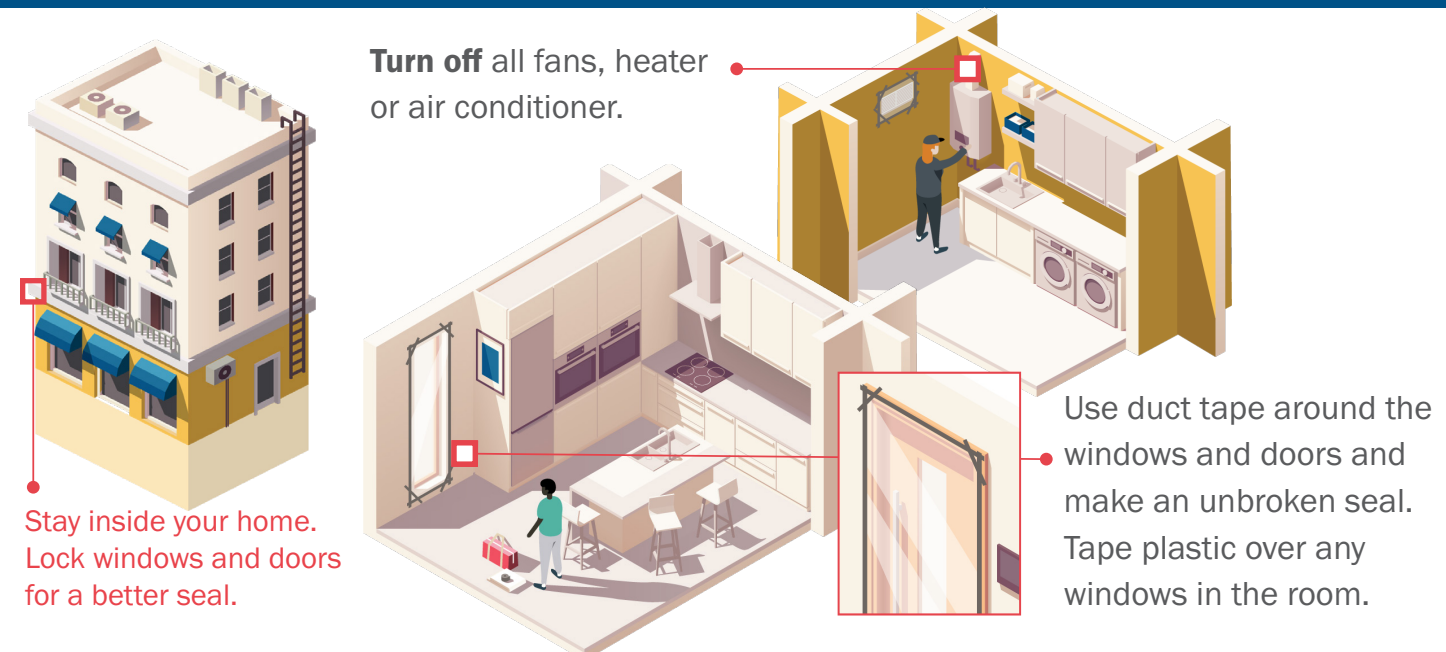
## If you are in a **Manufactured or Mobile Home**



## If you are in a **1- or 2-Story Building** May have an attic and/or basement



## If you are in a **Multistory Building** Includes schools, apartments, and offices



## How long to shelter-in-place?



A shelter-in-place will last approximately **12 hours or less**, rarely will it go longer.



FEMA