



Membership Meeting
January 21, 2026 @ 1pm
Meeting Notes

The January Membership Meeting of the Northeast Florida Healthcare Coalition was held virtually via Zoom. The meeting commenced at 1:00 pm on Wednesday, January 21, 2026.

CALL TO ORDER

The meeting was called to order by the Chair with a validation of members, with the following Executive Board members present. Quorum was met for voting.

Baker County – Kassie Knoll, John Blanchard
Clay County – Sonny Rodgers, Don Weatherby
Duval County – Katherine Jones
Flagler County – Jaffy Lee, Bob Pickering
Nassau County – Briana Angstman
St. Johns County – Gavin Butler, Philip Hernandez
Emergency Management – John Blanchard, Jonathan Lord
EMS – Tim Devin
Hospitals – Dave Chapman

Absent:

Public Health – N/A
Long-Term Care – Jerry Lynn Daniels, Evelena Dowling
Home Health – Susan Chapman, Netasha King

A digital sign-in link was provided to attendees. The sign-in sheet is attached to the minutes.

***Approval of Minutes**

The draft minutes from October 15, 2025, Membership Meeting were provided as part of the meeting packet.

The Chair called for a motion. A motion was made to approve the draft minutes by Gavin Butler (St. Johns County). A second was made by Tim Devin (EMS). Motion carries.

FINANCIAL

***Budget Report**

The finance report for December 2025 was presented by Annie Sieger.

The Chair called for a motion. A motion was made to approve the financial report by Tim Devin (EMS). A second was made by Gavin Butler (St. Johns County). Motion carries.

Management and Administration

Project Funding

Four Project Focus Areas:

1. Pediatric Restraint Devices for EMS
2. Hospital Disaster Stretchers
3. Evacuation Equipment for Long-Term Care
4. Evacuation Equipment for Hospitals

Based on survey results, the direction of the working group, and Board approval, staff are working to fulfill all EMS, LTC, and stretchers for hospitals. Any remaining funds will be used to purchase med sleds for hospitals. Once staff receive approval for the purchase by the NEFRC Board of Directors, large equipment will be directly sent to facilities in late winter and early spring.

BUSINESS

***Approval of General Membership Requests**

As required in the bylaws, the Board must approve all membership requests. There have been six (6) membership requests since the last meeting. The list was provided in the meeting packet.

The Chair called for a motion. A motion was made by Gavin Butler (St. Johns County) to approve the new members. A second was made by Tim Devin (EMS). Motion carries.

CIKR Training Overview – Richelle Starling

Richelle Starling with the Northeast Florida Fusion Center, provided meeting attendees with a brief overview of the Florida Critical Infrastructure Key Resources (FL-CIKR) Database. Meeting attendees were given documents on the training and the intended audience for the training and database access.

Meeting Schedule

Staff shared the upcoming meeting schedule to account for the upcoming State meetings and Alliance meeting in March.

- February – Canceled due to mandatory State meeting
- March 18th – Virtual Alliance Meeting

TRAINING AND EXERCISE

VTTX Opportunities

Staff shared the virtual tabletop exercise series continues through the rest of the fiscal year. These exercises are beneficial and can be used to meet facility's CMS 'Exercise of Choice' requirement. As a reminder, each scenario is offered two times.

- Supply Under Pressure: A Supply Chain TTX
 - February 3rd & February 20th
- Storm Resilience: A Tropical Weather TTX
 - April 30th & May 13th

Shelter-In-Place Training & Exercise

Staff shared there will be in-person train-the-trainer, shelter-in-place training throughout the region this upcoming spring. The intent is for facilities to attend this training, and then bring the training

to staff at their organization. Those who attend the pre-requisite train-the-trainer will be able to participate in the subsequent community-based exercise on Tuesday, April 28th. Program details are attached to the minutes and are on the website.

Medical Response & Surge Exercise (MRSE)

The Medical Response and Surge Exercise (MRSE) is an annual requirement and is designed to test the region's capability and capacity to manage and support a surge of patients equal to at least 10% of their licensed general medical/surgical bed capacity. The exercise will be held in the North Central region this fiscal year. Planning meetings will start in March, and the exercise will take place in May.

CDP Virtual Training Offerings

Staff shared the upcoming virtual training opportunities offered to anyone in Florida through the Center for Domestic Preparedness. Training courses include Crisis Standards of Care and Treatment Decision-Making, Mass Casualty Incident Response, and Special Needs Population Considerations During Emergency Response. The flyer with more course information and registration links is attached to the minutes.

Center for Independent Living of North Central Florida Preparedness Expos

The CILNCF is hosting 5 preparedness expos throughout the region this upcoming spring. The preparedness expos are for those within the community with disabilities and for organizations/services to come together to learn more about preparedness. There are spots still available for those who wish to participate as a vendor.

OPEN DISCUSSION

- Hospitals – Mr. Dave Chapman shared there is nothing major to report and their hospital is seeing higher than normal census counts but are not surging like other parts of the state are.
- Public Health – Ms. Katie Jones (Duval County) shared they are busy preparing for upcoming training and plan reviews.

Mr. Sonny Rodgers (Clay County) shared they are working with their Epi team to mitigate local healthcare system surge. Working with Clay EM for their upcoming reunification exercise and would like area hospital participation as a virtual player. Additionally, they are working with TEEX to implement a healthcare preparedness certification program (to include 4 TEEX courses) and will share more information as available.

Ms. Jaffy Lee (Flagler County) shared they are updating plans/deliverables and are planning to inventory the local school(s) during spring break ahead of storm season.

- EMS – Mr. Tim Devin shared there was nothing to report for EMS.
- Emergency Management – Mr. John Blanchard (Baker County) shared they are working on statewide exercise and are looking forward to participation from their hospital and DOH.

Mr. Tim Devin (Clay County) shared they received UASI funds to conduct a full-scale family reunification exercise in June. Shared they would like local hospitals to participate as remote players to simulate patient movement and reunification. Mr. Devin shared with attendees that SERT TRAC is a great resource for free, local training opportunities.

Mr. Rickie Grace (Duval County/COJ) shared they are going to start calls for special needs registry updates and planning for the Jax Ready Festival in April.

Mr. Gavin Butler (St. Johns County) shared they are starting the process for their hurricane exercise and recently participated in a reunification exercise with the Florida School for the Deaf and Blind, and how insightful it was to participate. Additionally, shared with attendees the updates AHCA is making to requirements for LTC and facilities who serve those with intellectual and cognitive disabilities. Mr. Butler encouraged if facilities had questions, to reach out to their local emergency management representative.

- Home Health – Nothing to report.
- Long-Term Care – Nothing to report.

Ms. Shanti Smith-Copeland recommended the Coalition look into the FCC funding as it is targeting rural healthcare clinics, and the timeline for application is closing soon.

ADJOURN

The meeting was adjourned at 1:41PM.

NEXT MEETING

**Virtual Alliance Meeting
Wednesday, March 18, 2026, at 1:00PM**



Membership Meeting Attendance
January 21, 2026, @ 1pm

| Name | Name (Last) | Facility Name | Facility Type | 'other' |
|-------------|--------------------|-------------------------------------|---|----------------|
| Dave | Chapman | Ascension St. Vincent's Southside | Acute Care Hospitals (Core HCC Member) | |
| Tim | Devin | Clay County Emergency Management | EMS (Including inter-facility and other non-EMS patient transport systems; Core HCC Member) | |
| Kassie | Knoll | DOH-Baker | Public Health Agencies (Core HCC Member) | |
| Sonny | Rodgers | DOH-Clay | Public Health Agencies (Core HCC Member) | |
| Briana | Angstman | DOH-Nassau | Public Health Agencies (Core HCC Member) | |
| Philip | Hernandez | DOH-St. Johns | Public Health Agencies (Core HCC Member) | |
| Jonathan | Lord | Flagler County Emergency Management | Emergency Management Organizations (Core HCC Member) | |
| Bob | Pickering | Flagler County Emergency Management | Emergency Management Organizations (Core HCC Member) | |
| Don | Weatherby | DOH - Clay | Public Health Agencies (Core HCC Member) | |
| Nathan | Carpenter | Brooks Rehabilitation Hospital | Acute Care Hospitals (Core HCC Member) | |
| Darian | Pearson | Brooks Rehabilitation | Acute Care Hospitals (Core HCC Member) | |
| Steven | Viola | AdventHealth Palm Coast and Parkway | Acute Care Hospitals (Core HCC Member) | |
| Kayla | Futch | Clay County Emergency Management | Emergency Management Organizations (Core HCC Member) | |
| Jaffy | Lee | DOH – Flagler | Public Health Agencies (Core HCC Member) | |
| Katie | Jones | DOH – Duval | Public Health Agencies (Core HCC Member) | |
| Leah | Guthrie | Mental Health Resource Center | Behavioral Health Services and Organizations | |
| John | Blanchard | Baker County Emergency Management | Emergency Management Organizations (Core HCC Member) | |
| Travis | Peistrup | Baptist Medical Center | Acute Care Hospitals (Core HCC Member) | |
| Tara | Willis | Aza Health | Outpatient health care delivery (e.g., ambulatory care, clinics, community and tribal health centers, | |

| | | | | |
|----------|----------------|---------------------------------------|--|----------------------|
| | | | Federally Qualified Health Centers, urgent care centers, free standing emergency rooms, stand-alone surgery centers) | |
| Michael | Layne | HCA Florida Orange Park Hospital | Acute Care Hospitals (Core HCC Member) | |
| Rickie | Grace Jr. | JFRD - EPD | Emergency Management Organizations (Core HCC Member) | |
| Cathleen | Ball | Florida Medical Consulting | Outpatient health care delivery (e.g., ambulatory care, clinics, community and tribal health centers, Federally Qualified Health Centers, urgent care centers, free standing emergency rooms, stand-alone surgery centers) | |
| Gavin | Butler | St. Johns County Emergency Management | Emergency Management Organizations (Core HCC Member) | |
| Faye | Evans | Florida Medical Consulting | Outpatient health care delivery (e.g., ambulatory care, clinics, community and tribal health centers, Federally Qualified Health Centers, urgent care centers, free standing emergency rooms, stand-alone surgery centers) | |
| Janet | Dickinson | ElderSource | Other | Area Agency on Aging |
| Lawana | Jolivette | Ascension St. Vincent's Riverside | Acute Care Hospitals (Core HCC Member) | |
| Shanti | Smith-Copeland | iParametrics, LLC | Other | Consulting |
| Richelle | Starling | Northeast Florida Fusion Center | Local public safety agencies (e.g., law enforcement and fire services) | |



2025-2026 VIRTUAL TABLETOP SERIES

Strengthen your preparedness and build resilience in this year's virtual tabletop (TTX) series

- Engage in interactive scenarios to test plans and identify improvement opportunities
- Collaborate with partners across the region
- Learn and share best practices to sustain operations during emergencies
- Receive a detailed After-Action Report/Improvement Plan and Certificate of Participation

Don't miss this chance to enhance your readiness, connect with peers, and strengthen your response capabilities.



SUSTAINING CARE:
AN EXTENDED
DOWNTIME TTX

Oct 30th, 2025
1 PM – 4 PM ET

Nov 18th, 2025
9 AM – 12 PM ET

Thanks to all who joined us!



**SUPPLY UNDER
PRESSURE:**
A SUPPLY CHAIN TTX

Feb 3rd, 2026
1 PM – 4 PM ET
[Register](#)

Feb 20th, 2026
9 AM – 12 PM ET
[Register](#)



STORM RESILIENCE:
A TROPICAL
WEATHER TTX

Apr 30th, 2026
1 PM – 4 PM ET
[Register](#)

May 13th, 2026
9 AM – 12 PM ET
[Register](#)

QUESTIONS?

Contact EmilyP@AllClearEMG.com

2026 OPERATION SHELTER-IN-PLACE: A HAZMAT INCIDENT

Shelter-In-Place means seeking immediate shelter inside a building when outside air quality is threatened or compromised by a chemical hazard; sheltering in place keeps you inside an area offering more protection.

In a collaborative effort, the following organizations will host a **community-based exercise on Tuesday, April 28, 2026, at 10 am** to assist facilities and organizations in preparing for potential hazardous material spills or releases. This program will also assist healthcare facilities in meeting CMS training and testing requirements. All facilities and organizations in the community are encouraged to participate.

- Healthcare Coalitions (HCC):
 - Region 3 Healthcare Coalition Alliance & Big Bend HCC
- Local Emergency Planning Committees for Hazardous Materials (LEPC)
 - LEPC Districts - Apalachee, East Central, North Central, and Northeast
- Regional Domestic Security Task Force (RDSTF): Regions 2 and 3
- Regional Councils:
 - Apalachee, East Central, North Central, and Northeast

Training and Exercise Overview

The above partners have collaborated to implement a training and exercise program to enhance shelter-in-place capabilities of community organizations and healthcare facilities for a hazardous materials incident.

Organizations and healthcare facilities interested in participating in this community-based exercise must fulfill the following requirements to receive a Letter of Participation.

1. Prepare - (Required)

- a. Attend an in-person sponsored Shelter-in-Place Training (1.5 Hours)
- b. Multiple offerings are available in February and March 2026
 - i. Refer to the attached Training Flyer for registration information
- c. Only organizations/facilities that have attended training can participate in the Exercise

2. Implement Training – Take the lessons learned in the sponsored shelter-in-place training and conduct internal training at your organization or healthcare facility in preparation for the community-based exercise.

Exercise details will be discussed at the pre-requisite training

2026 OPERATION SHELTER-IN-PLACE: A HAZMAT INCIDENT

Shelter-In-Place means seeking immediate shelter inside a building when outside air quality is threatened or compromised by a chemical hazard; sheltering in place keeps you inside an area offering more protection.

3. Conduct Exercise - **On Tuesday, April 28, 2026, at 10 am**, registered organizations and healthcare facilities will participate. The scenario will simulate a hazardous materials threat and the subsequent need to implement shelter-in-place protocols.

On Tuesday, April 28, 2026, at 10 am, you will:

- Receive an alert/email from exercise planners with the scenario and exercise instructions.
- Organizations and healthcare facilities will be responsible for implementing their internal shelter-in-place protocols.
- Document the shelter-in-place exercise by obtaining a sign-in sheet for participants. If appropriate, take photos during the exercise.

4. Evaluate Exercise - When the shelter-in-place exercise is complete, take a moment to review actions that worked well and actions that need improvement with exercise players.

a. Complete the following steps by Friday, May 8, 2026.

- Complete an online participant evaluation survey
- Submit exercise participant sign-in-sheets to eanderson@nefrc.org
- Submit any photos that you would like us to include in the after-action report (optional) to eanderson@nefrc.org

Documentation Provided - By **Friday, June 12, 2026**, your organization will receive a regional after-action report and letter of participation that you can include with your facility-specific after-action report and improvement plan. These documents may be used to meet general exercise requirements or healthcare CMS training and testing requirements.

For more information:

Eric Anderson, CEM, AICP, MEP
Deputy CEO
Northeast Florida Regional Council
Email: eanderson@nefrc.org
Phone: 904-505-3428

Tyler Nolen
LEPC Coordinator
Northeast Florida Regional Council
Email: tnolen@nefrc.org
Phone: 904-715-0423

Exercise details will be discussed at the pre-requisite training



Shelter-in-Place Train-the-Trainer

Pre-Requisite to a Hazardous Materials Exercise

Healthcare facilities and other organizations interested in participating in the exercise on **Tuesday, April 28, 2026**, must complete the following shelter-in-place training requirement. Training opportunities will be offered in-person throughout the region. Exercise details will be discussed at the training, and will meet your 'Exercise of Choice' requirement.

Shelter-in-Place Training: Train-the-Trainer

Pre-Requisite to a Hazardous Materials Exercise

All trainings will be held in-person ONLY.

February 17, 2026 - St. Johns County

10am to 12pm
St. Johns County EOC
100 EOC Drive, St. Augustine, FL 32092

February 26, 2026 - Alachua County

9am to 11am
Gainesville Regional Utilities
4747 N Main St, Gainesville, FL 32609

March 3, 2026 - Leon County

9:30am to 11:30am
TROC Investigations
2090 Summit Lake Dr, Tallahassee, FL 32317

March 11, 2026 - Calhoun County

9:30am to 11:30am (CST)
Calhoun Liberty Hospital
16257 State Rd. 71 S, Blountstown, FL 32424

March 11, 2026 - Duval County

1:00pm to 3:00pm
FDLE Jacksonville Conference Center
921 N Davis Street, Jacksonville, FL 32209

March 12, 2026 - Marion County

10:30am to 12:30pm
Marion County EOC
692 NW 30th Ave, Ocala, FL 34475

March 17, 2026 - Columbia County

9am to 11am
Columbia County EOC
263 NW Lake City Ave, Lake City, FL 32055

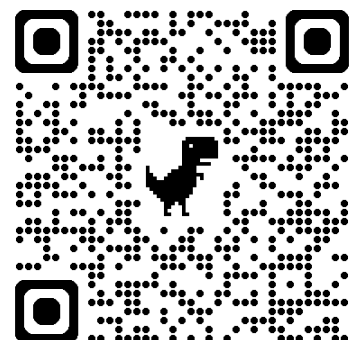
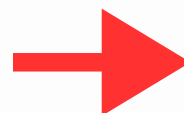
March 24, 2026 - Madison County

10am to 12pm
Madison County Extension Office
184 College Loop, Madison, FL 32340

March 26, 2026 - Clay County

10am to 12pm
FDOH - Clay County
1845 Town Center Blvd Building 400, Suite 405
Fleming Island, FL 32003

**[Click to Register](#)
or Scan Here**



Questions? Contact
EAnderson@NEFRC.org

Shelter-in-Place for Chemical Hazard

If told not to evacuate or it is too late to evacuate

When disaster strikes, it may be safer to stay in your home, place of employment, or other location. Learn where to go, what to do, and how long you should shelter-in-place for the hazards in your area.

Chemical agents are poisonous vapors, aerosols, liquids and solids that have toxic effects on people, animals or plants.

Take Additional Safety Measures

Go inside as quickly as possible. Bring any pets indoors.

Lock all doors and windows for a better seal.

Turn off the air conditioner or heater, all fans, close the fireplace damper and any other place that air can come in from outside.

If available, tape plastic over window(s) in the internal room you are

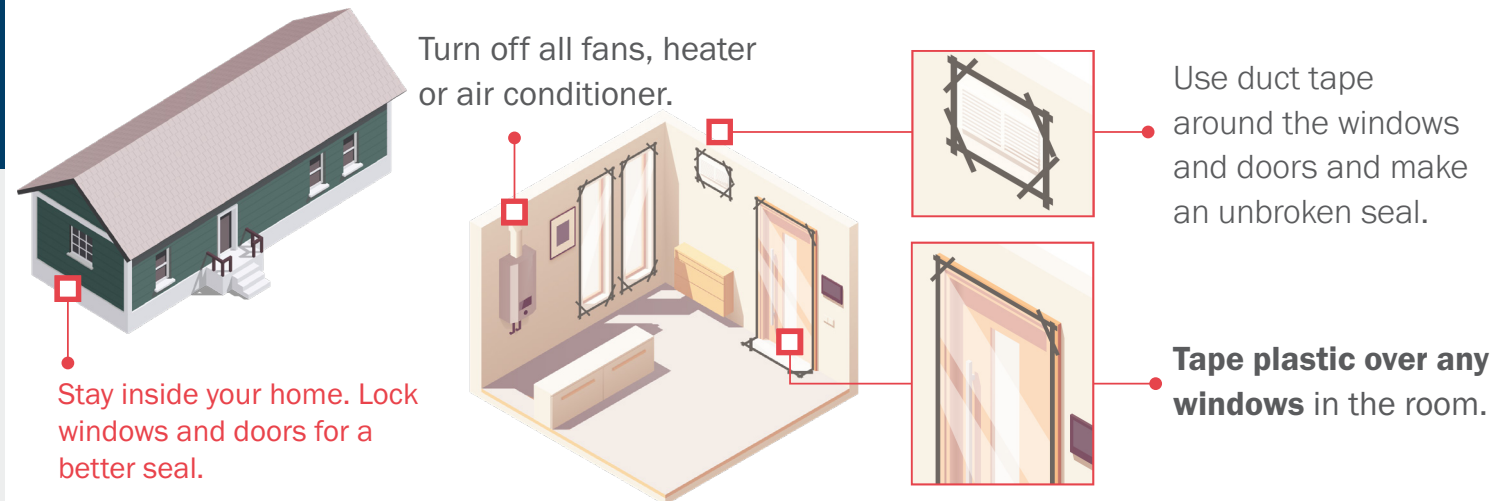
sheltering. Use duct tape around the windows and doors and make an unbroken seal. Tape over vents and seal any electrical outlets.

Do not drink water from the tap. Stored water will be safer.

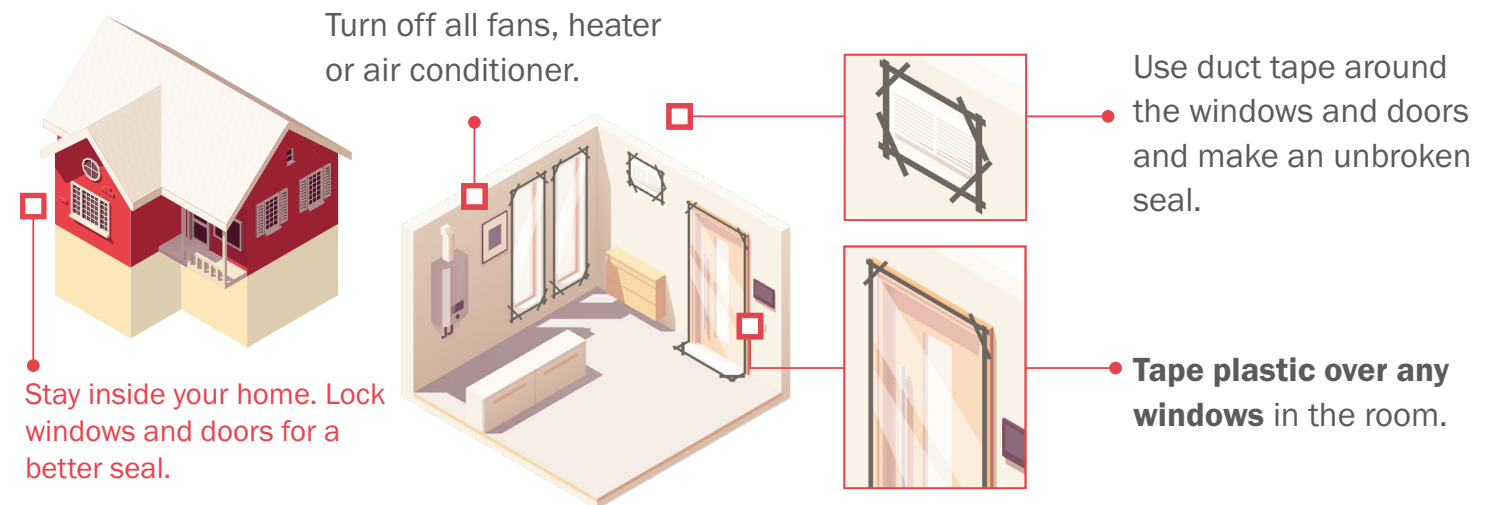
Listen for current emergency information and instructions from authorities.

Visit <https://community.fema.gov/ProtectiveActions/s/> for more information.

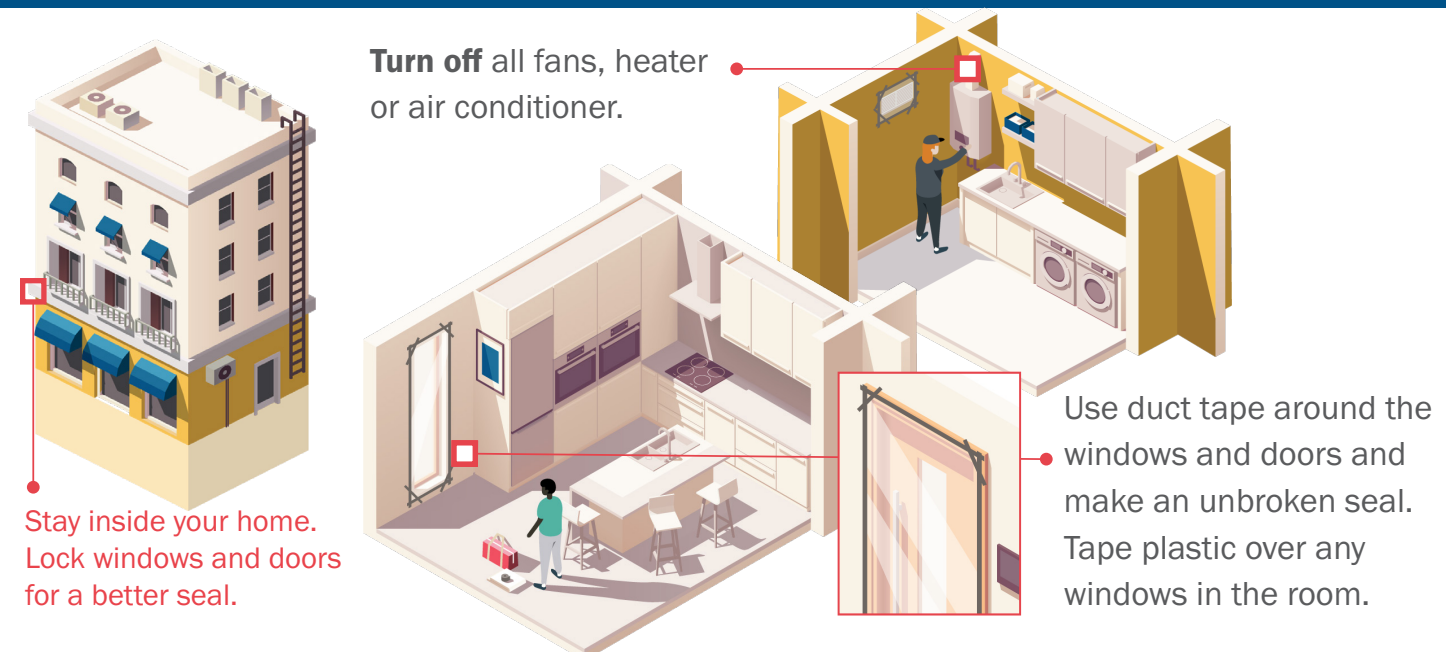
If you are in a **Manufactured or Mobile Home**



If you are in a **1- or 2-Story Building** May have an attic and/or basement



If you are in a **Multistory Building** Includes schools, apartments, and offices



How long to shelter-in-place?



A shelter-in-place will last approximately **12 hours or less**, rarely will it go longer.



FEMA

CDP Virtual Training Opportunities Florida Healthcare Coalition January-March 2025

- You **must** have a FEMA SID before applying for a course.
 - To register for a FEMA SID number, go to: <https://cdp.dhs.gov/FEMASID> and click “Register for FEMA SID” or “Forgot FEMA SID”
 - If you encounter any issues, please contact the FEMA SID help desk at: femasidhelp@cdpemail.dhs.gov
- Registering for a FEMA SID number **does not** register you for a class
- All students **must** register using the links below
 - If you encounter any problems registering, please contact VILT Support at: VILTSupport@cdpemail.dhs.gov

Crisis Standards of Care and Treatment Decision-Making (HCV1)

Defines and explores the potential causes resulting in crisis standards of care, discusses potential situations resulting in prioritization of care, and explores legal, moral, and ethical considerations and mechanisms for making care decisions based on limited resources or capabilities.

| Date | Time | Class Name | Link |
|------------------|--------------------|----------------|-------------------------------------|
| January 21, 2026 | 12:00PM-1:30PM EST | 26NV-0459 HCV1 | Click Here to Apply |

Mass Casualty Incident Response (HCV2)

Provides mass casualty triage education and practical experience in the application of the SALT (Sort, Assess, Lifesaving Interventions, Treatment/Transport) Mass Casualty Triage Algorithm. The instruction addresses global sorting of mass casualties, assessment of individual patients, performance of on-scene lifesaving interventions and the treatment, stabilization, and transport of patients for further treatment in a healthcare facility.

| Date | Time | Class Name | Link |
|-------------------|-------------------|----------------|-------------------------------------|
| February 10, 2026 | 1:00PM-2:30PM EST | 26NV-0460 HCV2 | Click Here to Apply |

Special Needs Population Considerations During Emergency Response (HCV3)

Provides an overview of the requirements, capabilities, and considerations necessary to ensure the special needs population requirements are addressed during planning, preparedness, response, and recovery.

| Date | Time | Promo Code | Link |
|---------------|---------------------|----------------|-------------------------------------|
| March 4, 2026 | 10:00AM-11:00AM EST | 26NV-0461 HCV3 | Click Here to Apply |

2026 EMERGENCY PREPAREDNESS EXPOS



**SAVE THE
DATE**

READY TODAY, SAFER TOMORROW

These FREE events will include a variety of information to help prepare people with disabilities in our community for any type of emergency.



**ASL INTERPRETERS
WILL BE PROVIDED**

For more information about the event,
please email Kevin Towles at
ktowles@cilncf.org or call (352) 368 - 3788

COLUMBIA COUNTY

Columbia County Senior Service
628 SE Allison Ct, Lake City, FL 32025
February 21st | 10am to 1pm

ALACHUA COUNTY

Senior Recreation Center
5701 NW 34th Blvd, Gainesville, FL 32653
March 12th | 9am to 1pm

MARION COUNTY

CFCC/Ewers Century Center
3001 SW College Rd, Ocala, FL 34474
March 24th | 9am to 1pm

PUTNAM COUNTY

Putnam County Fairgrounds
118 Fairgrounds Rd, East Palatka, FL 32131
April 11th | 10am to 1pm

BRADFORD COUNTY

Carley E. Johns Conference Center
1610 N Temple Ave, Starke, FL 32091
April 25th | 10am to 1pm